

XVR

Quick start Guide

Please read the Quick Start Guide carefully before using the product and keep it.

Safety Instructions

- This equipment should be installed in well-ventilated environment. When installing, please keep proper space with the ground. It is good for machine heat dissipation that keeping proper space with the ground when install. Keep the equipment away from heat source and high temperature environment.
- The device should be installed horizontally, to avoid the installation in a strong vibration position.
- This device is not waterproof. To avoid fire or other hazards caused by short-circuit, shall prevent the device from getting wet.
- Please use the hard disk recommended by the manufacturer (generally recommend monitor level hard disk of Seagate and Western Digital) to meet the requirements of long time reading and writing of big data. Please buy from form channels to ensure the quality of hard disk.
- This product can not withstand heavy loads. Do not place heavy objects or multi-layer overlays on this product.
- XVR installation and construction must meet the specifications, may refer to the relevant national or local standards.

About

This manual is used as a guide. Pictures, charts, images and all other information hereinafter are for description and explanation only. If this manual's any products description not accord with the real products, please in kind prevail.

Due to product version upgrade or other needs, the company may update this manual, if necessary, please visit the company's official website (www.herospeed.net).

Legal Disclaimer

The following exemptions or limitations of liability, please pay special attention to:

1. As a result of the following reasons, if the product interrupts or terminates the service for any of the following reasons, the company shall not be liable for personal injury or property damage to you or a third party. Failure to install or use properly as required; for the sake of national or public interest; force majeure; your own or third-party reasons (including but not limited to the use of third-party products, software or components, etc.

2. The company has not expressed or implied that this product is applicable to special purpose. This product may not be used in medical / safety equipment or other applications where there is a breakdown of the product that could result in life-threatening or personal injury, as well as hazardous or non-humanitarian hazards such as weapons of mass destruction, biological and chemical weapons, nuclear explosions or any unsafe use of nuclear energy use. Any loss or liability arising out of the above use will be at your own risk.

3. This product, when properly installed and used, can detect unauthorized intrusion during a particular delight but can not avoid accidents or personal injury or property damage. In your daily life, you should be vigilant and strengthen your safety awareness.

4. The Company is not responsible for any indirect, incidental, special punitive damages, claims, loss of property or loss of any data or documents. To the maximum extent permitted by law, the liability for compensation of company is not exceed than the amount you paid for this product.

1. Hard disk installation

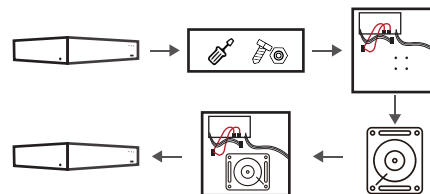
Step 1: Unscrew the screws and remove upper cover.

Step 2: Connect one end of the hard disk power cable and data cable to the motherboard and the other end to the hard disk.

Step 3: Put XVR on its side, Align the screw thread with preserved holes on the chassis backplane, and then fix the screws.

Step 4: Install the upper cover and fix it by screws.

Installation Diagram:



Please use the XVR dedicated SATA hard disk recommended by the device manufacturer. Make sure the power is off before installation.



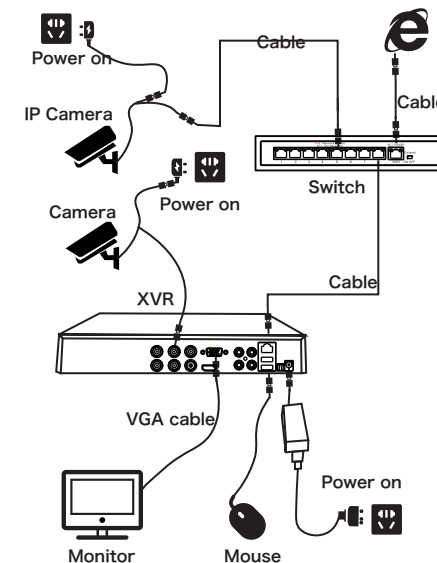
Cautions

If there is a hard disk rack, first remove the hard disk rack, install the hard disk on the hard disk rack, connect the hard disk power cord and data line, and then install the hard disk rack on the host.

2. Interface Description

Icon	Name
	DC Power Input
	AC Power Input
	Power switch
	VGA
	HDMI
	Ethernet
	USB
A-IN	Audio Input
A-OUT	Audio Output
Alarm-IN	Alarm In
Alarm-OUT	Alarm Out
RS485	RS485
RS232	RS232
	BNC

3. Connection indication



Cautions

Only when all the lines are connected can the power supply be connected.

4. Local Basic Operation

4.1. Boot Up

Make sure the input voltage matches the XVR consumption. Connect the device to the monitor and to the power adapter (if available). Plug in the power, switch on the power button (if available), then the device boot up.

NOTE:

1. It is recommended that you refer to international standards for power supply input with stable voltage values and low ripple interference.
2. You should reset the device administrator password (the system default username is "admin" and the password is "12345") when booting for the first time. To ensure the security of the device, please save the admin login password and modify it regularly.

4.2. Modify Password

Step 1: After the device is powered on, select the system language, click "Apply", enter the password, click "Login", click "Modify".

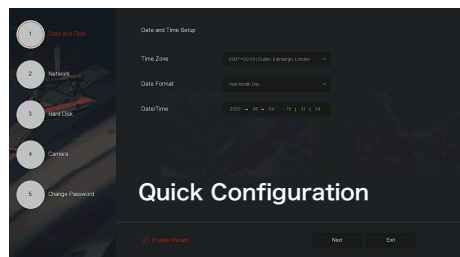
Step 2: Enter the new password and confirm password, tick off the "Unlock Pattern" to draw twice the consistent unlock pattern consisting of 4-9 points.

Step 3: Set the security question, select the security question 1, 2, 3 by the pull-down operation, and set the answer to the corresponding security question.

Step 4: Insert the USB flash drive into the device, and click "Export Key > Confirm > Save". The password is changed.

4.3. Quick Configuration

After the device is power on, the user can configure the system time, network parameter configuration, format hard disk, channel addition and other parameters of the device through the Wizard.



NOTE:

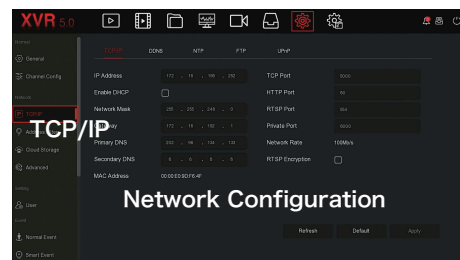
The hard disk must be formatted when installing it for the first time.

4.4. Network Configuration

Network parameters must be properly configured before operating the device over the network.

Step 1: On the preview interface, right-click to enter the menu, and click "⚙️" > TCP/IP .

Step 2: Modify the IP address of the device according to the actual network plan. (The default IP address of the XVR is 192.168.1.88).



4.5. Channel Configuration

Step 1: Choose "Menu > Configuration > Channel Config".

Step 2: Select the signal access type of each channel as required.

Step 3: Click "Apply > Confirm", the device restarts and the modified Channel configuration takes effect.

⚠️ Cautions

1. Single channel select signal access mode to follow certain rules, the interface will be automatically reflected in the optional options.
2. The actual access signal should be checked with the signal mode. If a channel selected "HD" mode, you can access the TVI/CVBS/AHD/CVI signal; when switching signals cause abnormal display, you can reconnect the video cable; if a channel is selected "IP" mode, is the IP channel . Can access IP equipment.
3. In the preview interface, when the HD (TVI/CVBS/AHD/CVI) channel has no image source, the channel displays "HD VIDEO" ; when there is no signal source in the IP channel, the channel displays "NO CONFIG" . When there is no image source, the channel displays "NO VIDEO" .

4.6. Add IP Device

Before accessing the IP channel, make sure that the XVR network connection is correct and valid.

Step 1: On the preview interface, right-click to enter the menu, and click "📺".

Step 2: Add IP camera automatically or manually. Automatically added, click "Auto add" button.

Manually added, click "Search", the Device Search interface automatically searches for the devices in the LAN with the "Onvif And Private" protocol (if using our IP camera, recommend selecting "Private"), select the IP device to be added, and click "⊕ Add".

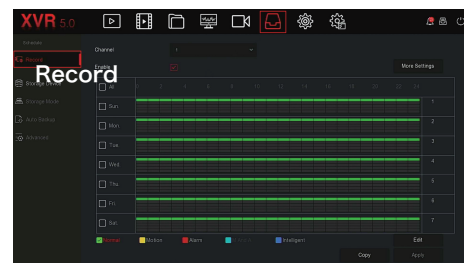
4.7. Recording Configuration

NOTE:

XVR opens all channels for 24 hours of normal recording by default.

Step 1: On the preview interface, right-click to enter the menu, and click "📄".

Step 2: Select the channel and recording type according to the actual needs. Hold down the left mouse button and drag the mouse in the time period diagram or click "Edit" to set the recording schedule, and click "Apply" to save.



4.8. Playback

◇ Instant playback

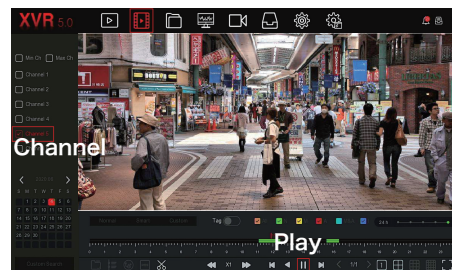
Step 1: On the preview interface, click the preview channel, the control bar will pop up below the channel.

Step 2: Click "🕒" to enter the instant playback interface, can play the first 5 minutes of the current channel video.

◇ Video playback

Step 1: On the preview interface, right-click to enter the menu, and click "📺".

Step 2: Select "Channel > Date", the searched video is displayed on the time progress bar, click "▶" to start playing the video.



4.9. Normal Event

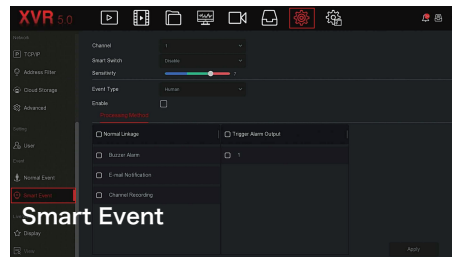
Step 1: On the preview interface, right-click to enter the menu, and click "⚙️" > Normal Event".

Step 2: Choose "Event Type > Channel > Enable" and set the corresponding alarm parameters.

The device's normal event alarms include Motion Detection, Video Tampering, Video Loss, Alarm Input, Alarm Output, Exception, and Buzzer.

4.10. Smart Event

Step 1: On the preview interface, right-click to enter the menu, and click "⚙️" > Smart Event".



Step 2: Select the smart event alarm mode for setting the channel. Smart event alarms supported by the device include Human, Face, Face Comparison. Each smart detection can be configured with different alarm processing method.

5. WEB Operation

Step 1: Make sure the XVR and PC are in same network segment, open the IE browser to enter the XVR address: such as "http://192.168.1.88/"(If the http port of the XVR is changed to 89, enter "http:// 192.168.1.88:89/") to enter the login interface.

Step 2: Select the language, enter the user name (default is "admin"), password (default is "12345"), and click "Login".

Step 3: In the preview interface, click "Play" to preview the video. The first time you connect, you need to download and install the plugin, and then preview it. .

NOTE:

When the browser fails to enter the device login interface, open IE browser, select "Tools > Internet Options > Security > Custom Level > ActiveX controls and plug-ins", all options are enabled.

6. iVMS320 Operation

Step 1: Open the IE browser and login to"http://www.hero-speed.net/".

Step 2: Click "PC Client" > "iVMS320 (Windows)" or "iVMS320 (Mac)" to download the latest version of the video management system [iVMS320].

Step 3: Follow the prompts to complete the installation and add devices for viewing and management.

7. Mobile App Operation

Use the phone to scan the QR code or search "iVMS320" from the application store to download and install the iVMS320 App.



After registering and logging in, you can add devices for remote viewing and device management.